

Rain Intensity Monitor

Rain Intensity Monitor is a fast and very accurate precipitation detection sensor. The sensor operates on the capacitive principle of rain droplet detection. Providing advanced heating and icing elimination methods, the sensor is suitable for installation in almost any conditions.

Measurements of:

- relative intensity of precipitation
- present liquid or solid precipitation

Elimination of:

- temperature changes
- dirt on the sensing element

Output signals:

- logical output 0 / 1
- optical isolated serial RS 485
- analog output 0 to 1 V

Specification

Measurement

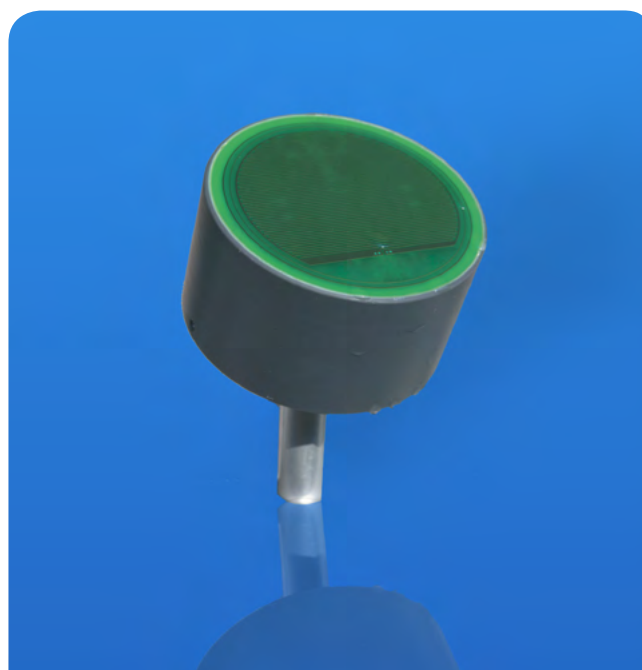
Measuring element	Capacitance Transducer
	Φ 70 mm
Precipitation	0 to 100%
Rain duration	0 to 60 s

Electrical and interface

Power supply	10 to 30 VDC
Power consumption	max. 30 mA
Heating	8 to 30 V
	30 Ω / 15 W
RS485	optical isolated, BR 9600Bd
Logical output	electronic relay
	$U_{max} = 30 \text{ V}, I_{max} = 300 \text{ mA}$
Analog output(0 to 1)	(0 to 1)V - 0 to 100% of range

Wiring

Signal	Name	Colour
Positive power supply	Vcc	red
Negative power supply	GND	blue
Positive heating power	Vheat+	violet
Negative heating power	Vheat-	black
Positive data RS485	A485	yellow
Negative data RS485	B485	green



Features

- **Easy maintenance**
- **Long-term stability**
- **All parameters are user configurable**
- **Industrial construction**
- **Low-power consumption**
- **Wide-range voltage supply**
- **Heating for icing elimination included**

Relay A	ReA	pink
Relay B	ReB	brown
Analog output	Uout	white
output ground	GNDout	grey

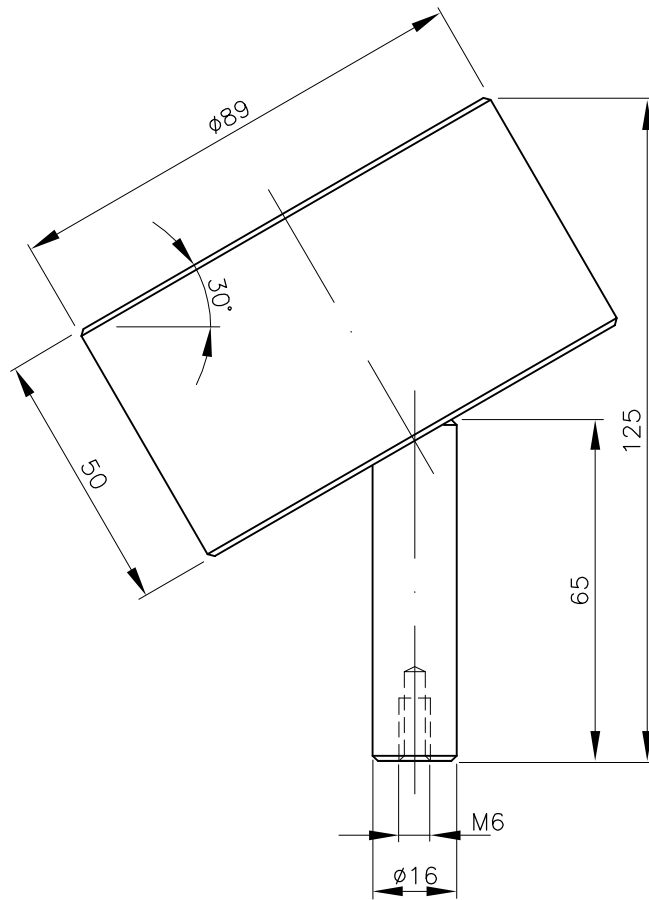
Mechanical

Dimension	Φ 89 x 50 mm
Weight	0.35 kg
Length of terminal cable	3 m

Environmental

Operating temperature	-35°C to +70°C
Operating humidity range	0 to 100%
Storage temperature range	-50 °C to +85 °C
Environment	IP66

Dimensions



Sample measurement

